



Making Sense of Election Cost

Tindak Malaysia Training #1

Contents

- What constitutes the major cost items for elections?
- Moving forward with election cost reporting and improvements

Understanding Election Costs

- *Major Cost Items*

- Rentals for Sabah 2020 (53.6%)
for Malaysian GE 1999 (44.88%)
- Professional Services and Other
Services Purchased and
Hospitality for Sabah 2020 (30%),
for Malaysian GE 1999 (42.4%)

- *Minor Cost Items*

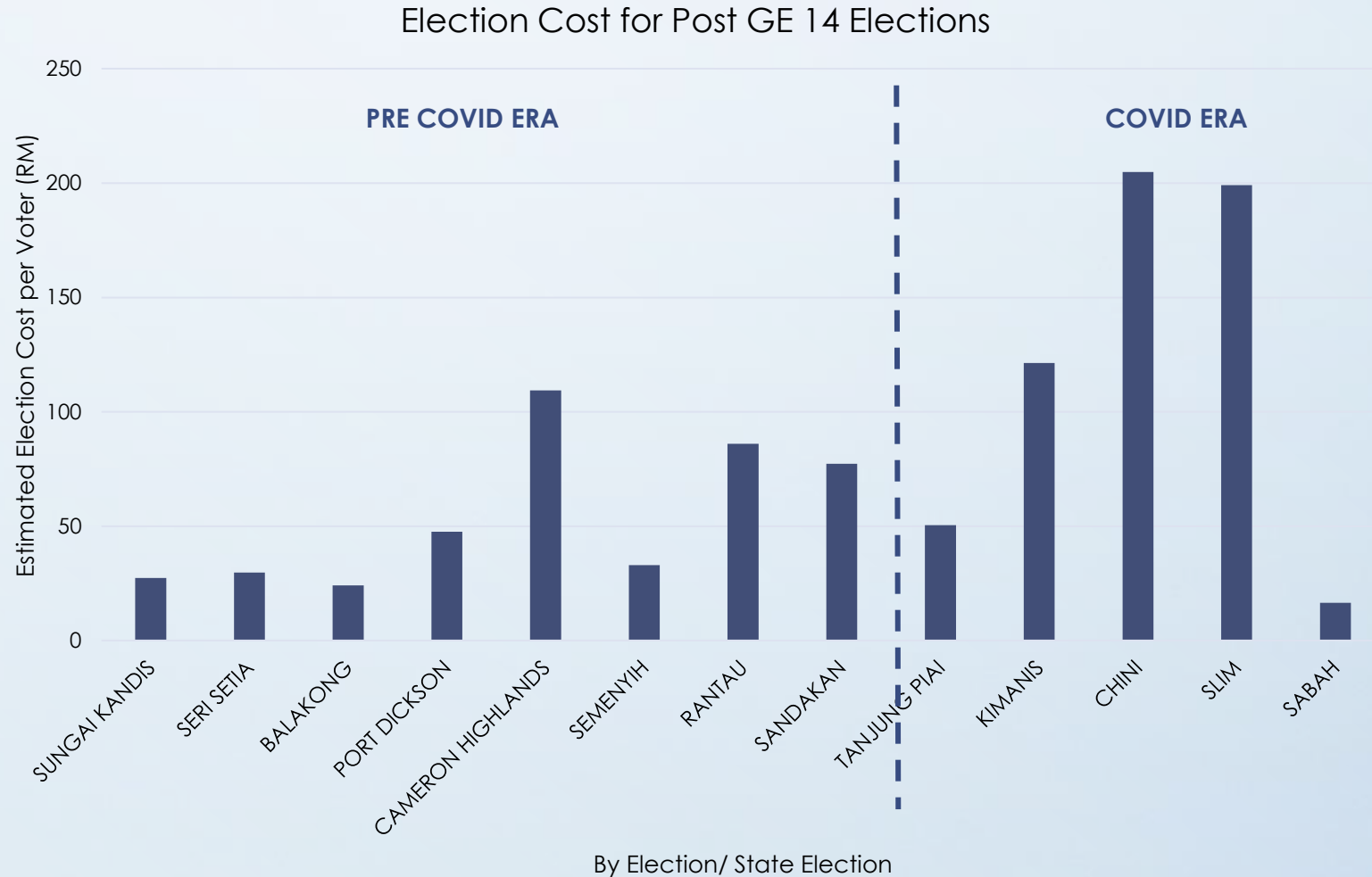
- Repairs (<1 %)
- Food and Drinks (<1 %)
- Overtime Allowance (<2%)
- Travel and associated
expenses/allowances (3 – 8 %)

** Sources : 1967 Sabah State Elections, 1995 Malaysian General Elections, 1999 Malaysian General Elections and 2020 Sabah State Election Reports/Statements by EC*

Understanding Election Costs

- *Why election costs go up?*
 - Increasing electorate means:
 - More polling districts
 - More polling stations
 - More polling streams
 - More polling staff
 - Increase of Parliamentary and DUN seats
 - More Returning Officers?
 - Increase in Printing Cost
 - Cost increase for ballots papers, other election materials
- *Why election costs go up?*
 - Increase in Price of petrol and rental rate of vehicles
 - Since 1999, EC made polling one day affair for Sabah and Sarawak
 - Led to increase in rentals for helicopters, 4WD and boats
 - Increase in allowance for polling staff
 - Establishment of Election Campaign Enforcement Teams (2004)
 - Printing of new editions of Laws (2004)
 - Increase in purchasing election materials (transparent ballot boxes, COVID procedures)
 - COVID Impact

Post GE 14 Election Costs



Rise of Costs

- On average 20+ new polling streams added for DUN (before COVID) and around 20 for Parliament Seats (before COVID)
- COVID procedures reduce number of voters per stream (from 600 to 400)

Source: Election Commission (EC) of Malaysia, compiled by Tindak Malaysia (2020)

Post GE14 Election Costs

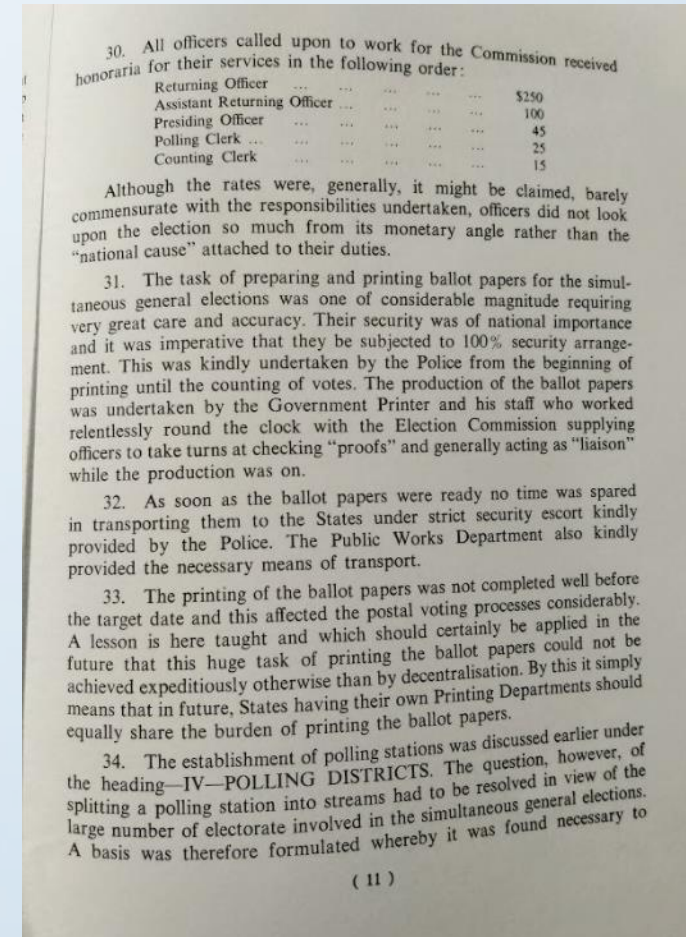
- *Small Repairs (Justifiable expenses)*
 - Improvement of Pavements for Kimanis Polling Centres
 - Installation of air conditioning units and lights for nomination centres (of which some are Badminton Halls)
- *Other miscellaneous Costs (Justifiable expenses)*
 - Renting golf buggies for schools that are uphill
 - Voter Cards (now with advisable timing)
 - Transparent envelopes for lock up keys

What are the other costs contribute to rise of election costs?

Moving Forward

References to Past

- In 1960s Election Report contained actual payment rates for various polling staff
- Itemised Budget Reports is sparse and only seems to exist for certain years
- Source of Itemised Budget Report: Parliamentary Reply and Election Report Books

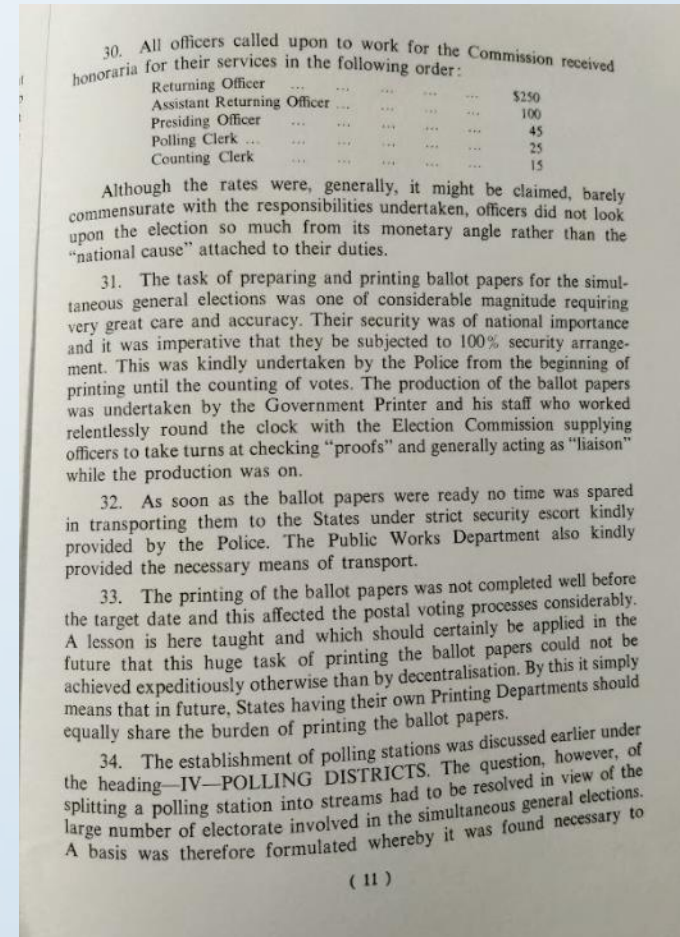


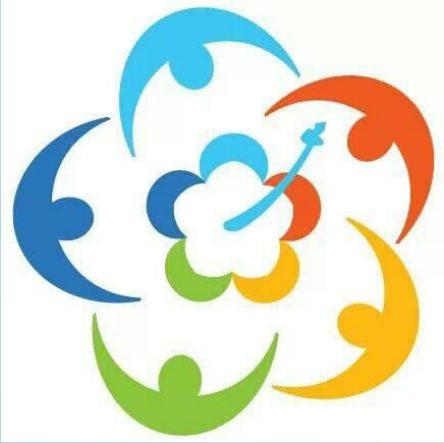
Example of 1960s Election Budget Reporting (EC)

Moving Forward

Moving forward

- Documenting specifics of small repairs that bring long term infrastructure
- If Election budget is not mandated for auditing, auditing should be made mandatory
- Itemised Budgeting must be given (mandatory disclosure)
- Cost exemptions for polling premise rentals (codify in law)





End

Making Sense of Election Cost

Tindak Malaysia Training #1

